

# COVER PAGE

## I. Manuscript Title

**First Author<sup>1)</sup>, Second Author<sup>2)</sup> and Third author<sup>3)</sup> (Arial 10)**

Manuscript has main author and co authors. Author names should not contain academic title or rank. Indicate the corresponding author clearly for handling all stages of pre-publication and post-publication. Consist of full name author and co authors. Corresponding author is a person who is willing to handle correspondence at all stages of refereeing and publication, also post publication.

### II. First author:

1. Name : (Author names should not contain academic title or rank)
2. Afiliation :
3. E-mail :
4. Orcid ID : (if the author doesn't have the ID please register at <https://orcid.org/>)
5. Contribution to this Manuscript:

### III. Second author:

1. Name : (Author names should not contain academic title or rank)
2. Afiliation :
3. E-mail :
4. Orcid ID : (if the author doesn't have the ID please register at <https://orcid.org/>)
5. Contribution to this Manuscript:

### IV. Third author:

1. Name : (Author names should not contain academic title or rank)
2. Afiliation :
3. E-mail :
4. Orcid ID : (if the author doesn't have the ID please register at <https://orcid.org/>)
5. Contribution to this Manuscript:

### V. Acknowledgement

.....  
.....  
.....

### VI. Reviewers Candidate :

..... Scopus/Orcid ID: .....

..... Scopus/Orcid ID: .....



.....  
.....  
.....  
**RESULTS AND DISCUSSION (Arial 10)**

Result and discussion be written in same part. They should be presented continuously start from main result until supporting results and equipped with a discussion. Unit of measurement used should follow the prevailing international system. Results and discussion must be written using 2500 until 3000 words.

.....  
.....  
.....  
.....

Equation:

$$H' = - \sum_{i=1}^s (P_i) (\log_2 P_i) \dots\dots\dots (1)$$

Remarks: .....

**Figures and Tables placed separated in last page of manuscript.**

**CONCLUSIONS AND SUGGESTION (Arial 10)**

Conclusion should be explained clearly. Suggestion placed after conclusion contains a recommendation on the research done or an input that can be used directly by consumer. Conclusion and suggestion must be written using 40 until 80 words.

.....  
.....  
.....

**REFERENCES (Arial 10)**

The author-year notation system is required and completed. All reference mentioned should be written down in reference using American Psychological Association (APA) style and arranged from A to Z. Articles have 10 recent references or over and 80% is journal. The most of references are primary ones (last five years). **Unpublished data and personal communication should not be cited as literature citations.** "In Press" articles that have been accepted for publication may be cited in references. Include in the citation the journal in which the "in press" article will appear and the publication date, if a date is available. References must be written using 340 until 670 words or consist of 10 until 20 references.

.....  
.....  
.....

**Reference to a Journal Publication:**

Abdallah, E. H., Musa, Y., Mustafa, M., Sjahril, R., & Riadi, M. (2013). Comparison between hydro- and osmo-priming to determine period needed for priming indicator and its effect on germination percentage of aerobic rice cultivars (*Oryza sativa* L.). *AGRIVITA Journal of Agricultural Science*, 38(3), 222-230. <http://doi.org/10.17503/agrivita.v38i3.886>

**Reference to a Book:**

Bolda, M. L., Tourte, L., Klonskyk, K. M., & de Moura, R. L. (2005). *Sample cost to produce fresh market raspberries*. Berkeley, US: University of California Cooperative Extension.

**Reference to a Chapter in an Edited Book:**

Tuong, T. P., & Bouman, B. A. M. (2003). Rice production in water-scarce environments. In W. Kijne, R. Barker, & D. Molden (Eds.), *Water productivity in agriculture: Limits and opportunities for improvement* (pp. 53–67). Manila, PH: CAB International.

**Reference in Proceeding:**

Hapsari, L. & Masrum, A. (2011). Diversity and characteristics of banana (*Musa acuminata*) diploid AA cultivars group collection of Purwodadi botanic garden. In D. Widyatmoko, D. M. Puspitaningtyas, R. Hendrian, Irawati, I. A. Fijridiyanto, J. R. Witono, R. Rosniati, S. R. Ariati, S. Rahayu, & T. Ng Praptosuwiryo (Eds.), *Conservation of tropical plants: Current condition and future challenge*. Paper presented at Proceedings of Seminar Cibodas Botanic Garden 159th Anniversary, Cibodas (pp. 225-229). Cibodas, ID: Indonesian Institute of Sciences

**Figures and Tables**

Figures and tables should be **editable** ones.

Figures's remarks placed in bottom with before 4pt. The title of figures placed after the remarks with single space.

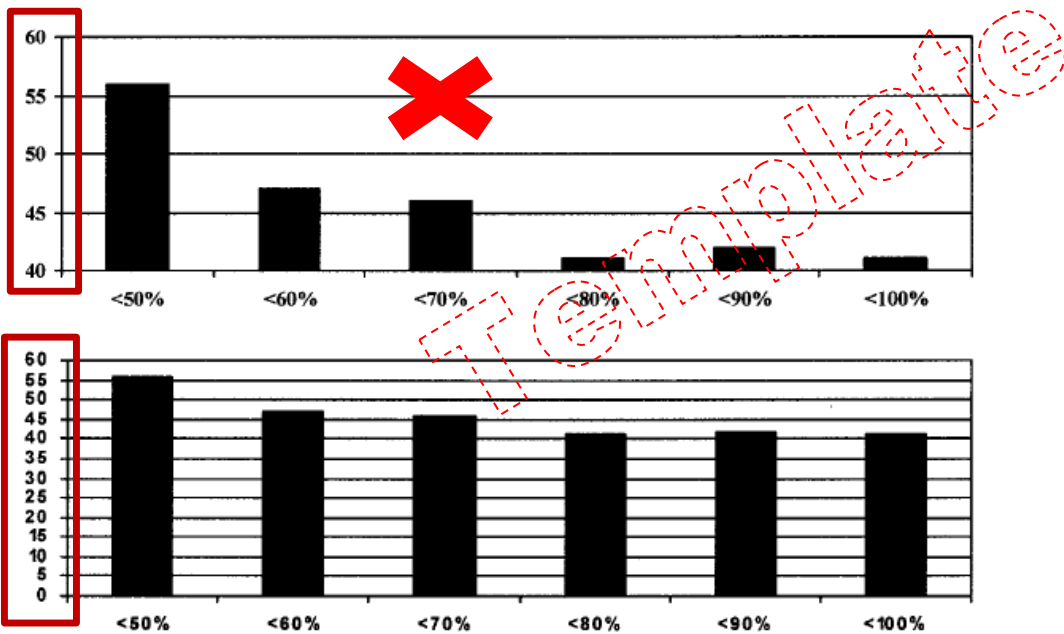
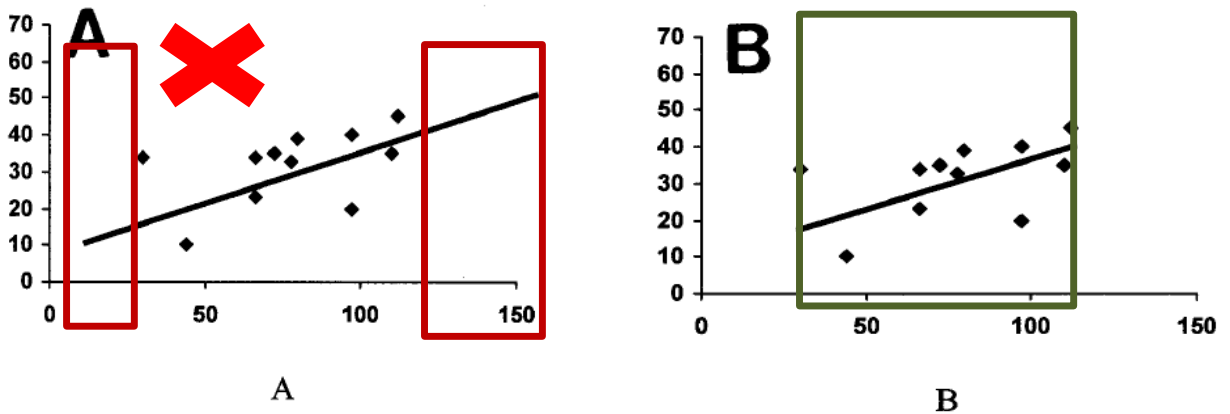


Figure 1.....

The title of tables should be written first with ARIAL 10, single space and after 6pt. Content of the tables should be written using ARIAL 9 single space and the remarks of tables placed in the bottom with ARIAL 9, single space and before 4pt.

Table 1. Effects of plant growth regulator types and concentrations on embryogenic callus induction from leaf tip explants of *D. lowii* cultured in ½ MS medium supplemented with 2.0 % (w/v) sucrose under continuous darkness at temperature of  $25 \pm 2$  °C after 60 days of culture

Cytokinin/Auxin (mg L <sup>-1</sup> )		Percentage of Survival (%)	Percentage of callus formation (%)	Density of callus	Color of callus
TDZ	NAA				
Control		24.0±8.0 <sup>g</sup>	2.0±1.47 <sup>d</sup>	+	Greenish-white
0.22	0.00	64.0±28.5 <sup>cd</sup>	18.0±10.4 <sup>bc</sup>	+	Greenish-white
0.33	0.00	60.0±24.5 <sup>cde</sup>	22.0±11.5 <sup>bc</sup>	+	Yellowish-white
1.0	0.00	48.0±20.5 <sup>def</sup>	24.0±13.1 <sup>bc</sup>	+	Greenish-white
3.0	0.00	90.0±30.3 <sup>ab</sup>	28.0±17.4 <sup>bc</sup>	++	Greenish-white
0.0	0.046	75.0±43.9 <sup>bc</sup>	28.0±17.4 <sup>bc</sup>	++	Yellowish-white
0.0	0.5	65.0±48.3 <sup>cd</sup>	25.0±13.9 <sup>bc</sup>	+	Greenish-white
0.0	1.0	42.0±29.8 <sup>efg</sup>	0.0±0.0 <sup>e</sup>	-	-
1.0	0.046	92.0±15.3 <sup>a</sup>	34.1±25.8 <sup>bc</sup>	++	White
3.0	0.046	96.0±19.8 <sup>a</sup>	52.0±16.5 <sup>a</sup>	+++	White
3.0	0.5	34.0±8.9 <sup>fg</sup>	12.0±8.8 <sup>bc</sup>	+	Yellowish-white
3.0	1.0	86.0±21.1 <sup>ab</sup>	28.0±17.9 <sup>bc</sup>	++	White
4.0	0.5	62.0±25.0 <sup>cd</sup>	18.0±10.4 <sup>bc</sup>	+	Greenish-white
4.0	1.0	50.0±26.0 <sup>def</sup>	14.0±9.1 <sup>bc</sup>	+	Greenish-white

Remarks: \*Mean values within a column followed by the same letters are not significantly different at  $p < 0.05$  according to Duncan's Multiple Range Test. Note. +: callus at tip, ++: callus at tip and midsection, +++: callus covered all surfaces, -: no callus